

# Fire Safety and Emergency Response at IHSC



Sean Fitzgerald, Environmental Health and Safety  
John Inglima, Public Safety



Hackensack Meridian  
School of Medicine

# Session Objectives

- What constitutes an emergency on campus.
- What to do in an emergency on campus.
- How you are alerted to emergencies.
- How to ensure the safety of yourself and others during an emergency.





# Public Safety

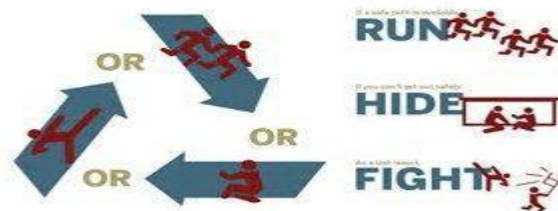
Public Safety Phone Number: **973-542-6600**



Hackensack Meridian  
School of Medicine

# Active Shooter

- An Active Shooter is an individual actively engaged in killing or attempting to kill people in a confined and populated area; in most cases, active shooters use firearms(s) and there is no pattern or method to their selection of victims.
- Because active shooter situations are often over within 10 to 15 minutes, before law enforcement arrives on the scene, individuals must be prepared both mentally and physically to deal with an active shooter situation.
- Our defense as individual is to RUN, HIDE, FIGHT (**there is no sequence to the order**)



# Active Shooter

- Remain Calm
- Be aware of your environment and any possible dangers
- Take note of the two nearest exits in any facility you visit
- If you are in an office, stay there and secure the door
- If you are in a hallway, get into a room and secure the door
- As a last resort, attempt to take the active shooter down. When the shooter is at close range and you cannot flee, your chance of survival is much greater if you try to incapacitate him/her.



# Identifying an Emergency

- See Something, Say Something
  - Not all emergencies are completely obvious
  - Always report anything that seems out of the ordinary
    - Smoke or Haze indoors, Large amounts of water on the floor, etc.
    - Medical emergencies with anyone in the building



# Identifying an Emergency

## Where to Report?

- Call Public Safety Dispatch

**973-542-6600**

- This is a 24/7 monitored phone line that can be utilized to dispatch any sort of assistance needed in any emergency.
- Provide as much information as possible
  - Location, Conditions, etc.



# Identifying an Emergency

Emergency Call Boxes are located throughout the Building 123 floors and in the parking areas.

- “Info” button contacts security dispatch.
- “Emergency” button contacts 911 and security dispatch.





# Emergency Blue light Phones located through the school and campus



Hackensack Meridian  
School of Medicine

# AEDs

- AEDs are located on floors 1 through 4 within the center stairwell.
- One on the lower level next to the bookstore.



# Security Office is located in the lower level of Building 123



Hackensack Meridian  
School of Medicine

# Student Lot

- South lot is for students with purchased parking.
- Once swipe access has been granted, the lot can be accessed via the parking gate pictured here utilizing your student badge.



# IHSC Garage

- The IHSC garage is utilized for student overflow who purchase parking.
- Parking is also available here at a daily rate of \$10.



Hackensack Meridian  
School of Medicine

# Student Parking Sticker

- Sticker provided with purchased parking belongs in driver side rear passenger window.



# **PARKING AUTHORIZED FOR: ON3 CAMPUS**

**24 HRS/ 7 DAYS A WEEK  
UNAUTHORIZED PARKING IS PROHIBITED  
AND UNAUTHORIZED VEHICLES WILL BE TOWED  
AT VEHICLE OWNERS EXPENSE**

## **E.C.R.B. TOWING**

**65 CLIFTON BLVD. CLIFTON, NJ 07011**

**973-680-0097**

**RELEASE HOURS  
MON-FRI 9AM-5PM  
SAT 9AM-1PM**

	<b>FEES</b>
<b>TOWING FEE</b>	<b>\$150.00</b>
<b>STORAGE PER DAY</b>	<b>\$50.00</b>
<b>DROP FEE</b>	<b>\$100.00</b>

**DIFFERENT RATES APPLY FOR VEHICLES OVER 5000LBS  
PURSUANT TO NJ 39:4-56.6, NJAC 13:45A-31.6, NJSA 56:13-3**

**DIVISION OF CONSUMER AFFAIRS**

**1-800-242-5846 OPTION 4**



**Hackensack Meridian  
School of Medicine**

# Access ID Cards

- Access ID cards must be on your person at all times when on campus.
- Access ID cards belong to SHU and should be presented upon request by Public Safety.
- Access ID cards are unique to you and should only be used by you.
- Do not use your swipe access for other individuals where swipe access is required.





# Emergency Response and Safety

---



Hackensack Meridian  
School of Medicine

# Emergency Notification

- Some emergencies will alerted via the overhead alarm system.
- Emergencies also require notification to personnel off campus or in other parts of the campus where the alarm system may not reach.
- Digital alert systems help fill this gap at numerous institutions.



# Emergency Notification

## Everbridge Mass Notification System

- Digital alert system utilized by the Hackensack Meridian Health System.
- Ensure information provided is accurate and up to date.



# Fire Safety

---



Hackensack Meridian  
School of Medicine

# Fire Safety

If you discover smoke or fire, remember:

R.A.C.E.

- Relocate
- Alarm
- Confine
- Evacuate



Hackensack Meridian  
School of Medicine

# Fire Safety

## Relocate

- Be aware of those who may need assistance.
- Guide people from immediate danger, if you can do so without endangering yourself or others.
- Remind others to report to their designated meeting areas.



# Fire Safety

## Alarm

- Pull the building fire alarm to alert others and exit the area following appropriate evacuation routes.



# Fire Safety

## Confine

- Close doors as you exit, if it is safe to do so.
- Shut off fuel sources such as piped or bottled gases, but only if it can be done safely.





# Fire Safety

## Evacuate

- Leave the building immediately.
- Exit via the safe path of travel.
- Do not use an elevator.
- Do not open doors that are hot.
- Alert emergency response personnel to others trapped or left behind in the building
- Proceed to the designated meeting site and await further instructions.



# Building Evacuation

---



Hackensack Meridian  
School of Medicine

# Building Evacuation

- Stop all activities and immediately evacuate using the fire rated stairwell.
- Go to the nearest emergency exit or follow exit signs to the nearest stairwell. If the primary evacuation route or exit is blocked, seek a secondary route.
- Once outside the building, report to your designated meeting site and await further instructions.
- Do not re-enter the building until the fire department says it is safe to do so.



# Building Evacuation

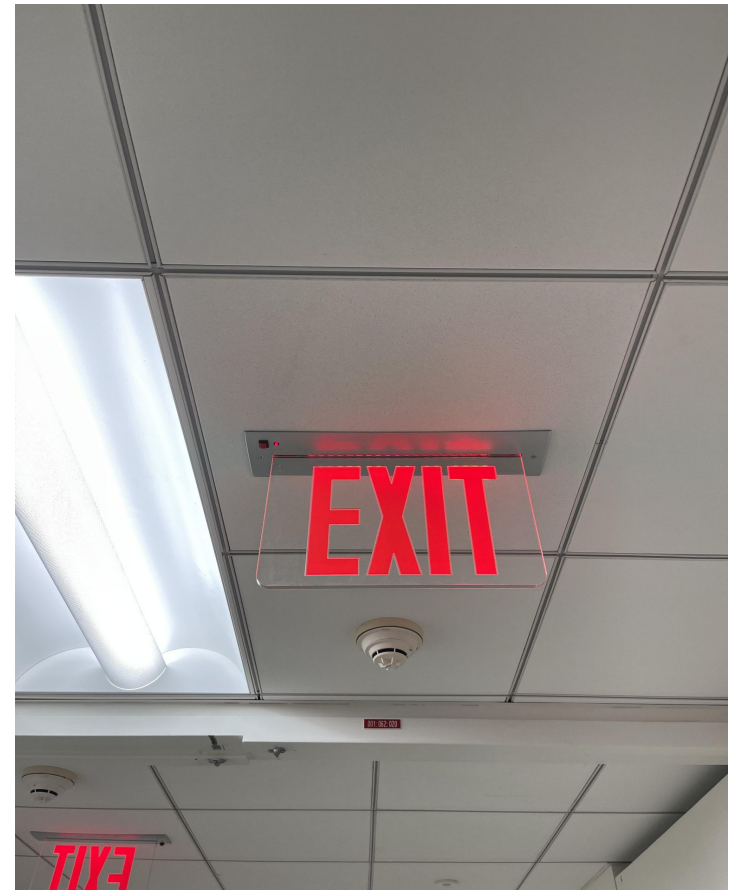
Evacuation procedures for building occupants with disabilities or injuries:

- For individuals with disabilities or injuries assist with evacuation when possible using the nearest stairwell.
  - These stairwells are safely fire rated for hours.
- If evacuation cannot be done safely contact Emergency Response personnel or Public Safety with name, location (floor and stairwell), why you cannot evacuate, and if you need immediate assistance. This information will be helpful for first responders.
- For individuals with hearing impairment notify them of an emergency and assist them in evacuating the building.



# Building Evacuation

- During an alarm, follow the illuminated exit signs to the back of the pods on each floor to the emergency exit staircases at the end of each pod.
- If the pod exit is blocked or obstructed, proceed to the end of the next nearest pod and that exit staircase.



# Building Evacuation

**DO NOT** use the center staircase as this is not a fire rated exit



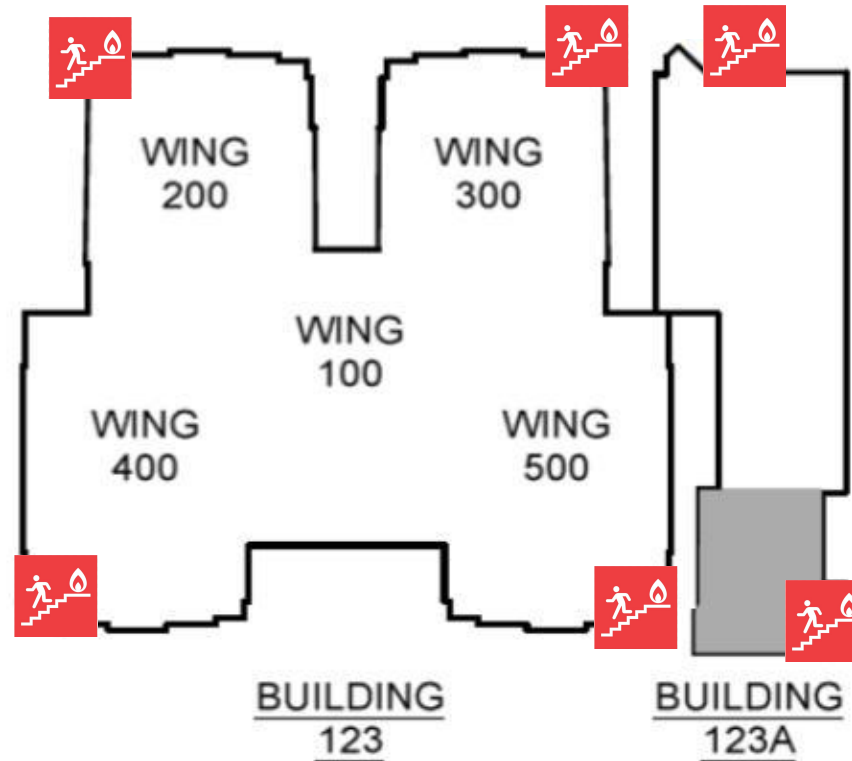
Hackensack Meridian  
School of Medicine

# Building Evacuation

Proceed through the exit door and down the exit staircase to the front of Building 123/123A.



# Building Evacuation



Muster Area in Front School Parking Lot



Hackensack Meridian  
School of Medicine



# Building Evacuation



Hackensack Meridian  
School of Medicine

# Campus Map



## METRO BOULEVARD

### BUILDING 100

- Ralph Lauren Corporation

### BUILDING 200

- Eisai Inc.

### BUILDING 123

- Hackensack Meridian School of Medicine
- Seton Hall University College of Nursing
- Seton Hall University School of Health and Medical Sciences
- HMH North Regional Offices
- HMH Research Integrity Office

### BUILDING 123 A

- HMH Center for Discovery and Innovation Annex

## IDEATION WAY

### BUILDING 111 (formerly 102)

- HMH Center for Discovery and Innovation

## PARKING

### Metro Boulevard

- Metered street parking - B123 Visitors Only

### Metro Boulevard and Prism Street

- Lot #1 North – Permit required

### Metro Boulevard and Medicine Way

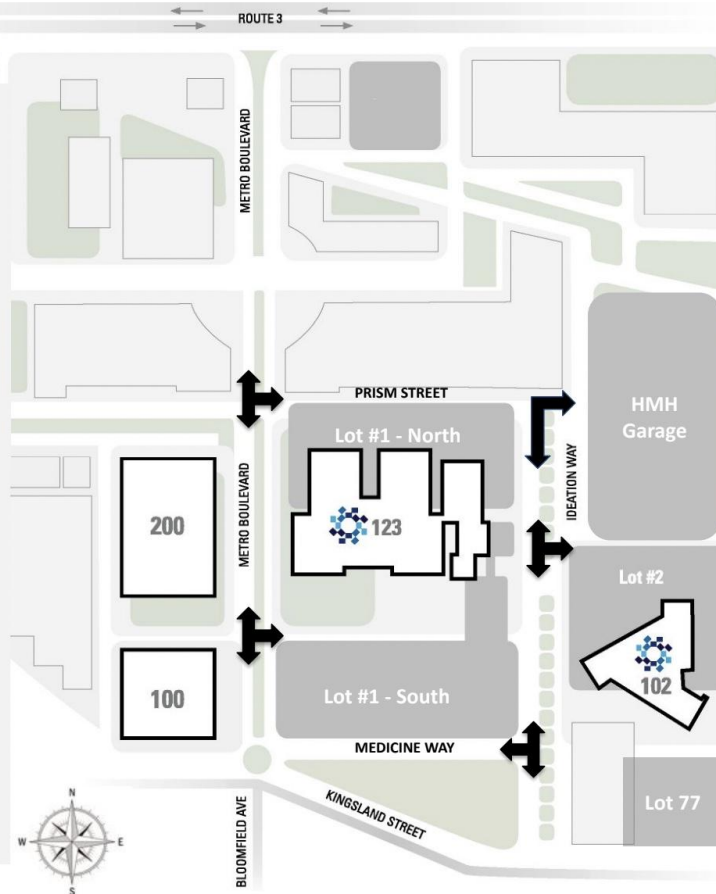
- Lot #1 South – GATE CONTROLLED - Students Only

### Medicine Way

- Street parking open to public

### Ideation Way

- Street parking - B111 (102) Tenants and Visitors Only
- Lot #2 – B111 (102) Tenants Only
- HMH Garage - GATE CONTROLLED
  - West Entrance - Students, B123 Staff & Visitors
  - South Entrance - B111 (102) Tenants & Visitors
  - Permit/Access Card Required
  - Visitor Daily Parking Fee \$10.00
- Lot #77 - Prism Partners Only



Hackensack Meridian  
School of Medicine

# IHSC Website

<https://www.shu.edu/interprofessional-health-sciences-campus/>



Hackensack Meridian  
School of Medicine

# Safety Summary

- If you see something out of the ordinary, Call Public Safety Dispatch **973-542-6600**
- If you discover smoke or fire, remember: R.A.C.E. Relocate, Alarm, Confine, Evacuate
- During an alarm, evacuate the building through the stairwells at the end of the pods, muster in front of the building, wait for further instructions.
- Additional information can be found at the IHSC website:  
<https://www.shu.edu/interprofessional-health-sciences-campus/>

